
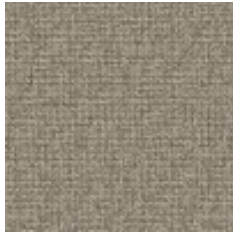


Use Upholstery, Panel Fabrics
Content 100% Polyester (Postconsumer Recycled)
Finish Silicone (Supreen)
Backing Fluid Barrier (Supreen)
Cleaning Bleach (10:1), Water-based/Solvent (WS)
Weight 21.5 ounces/linear yard
Width 54 inches (137 cm)
Flammability ASTM E 84 Unadhered Class A, CA TB 117-2013
Abrasion 100,000 Wyzenbeek double rubs (CD)
Lightfastness 40 hours
ACT 
Standards & Certifications Healthier Hospitals, HPD, LBC Red List Compliant, Mindful Materials, Prop 65 Compliant, WELL
Material Chemistry No Antimicrobials, No Flame Retardants, No PFAS
LEED Recycled Content
Sustainable Logistics Ships Carbon Neutral
Warranty 5 years



Travertine
3169-101



Dovetail
3169-102



Ore
3169-103



Farro
3169-201



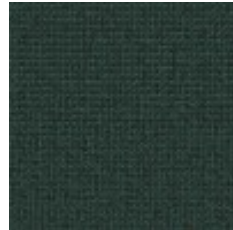
Earthen
3169-202



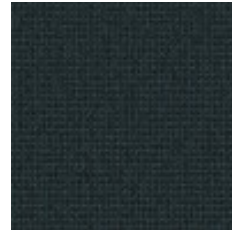
Heat
3169-301



Patina
3169-401



Canal
3169-402



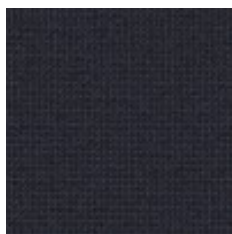
Oceanside
3169-403



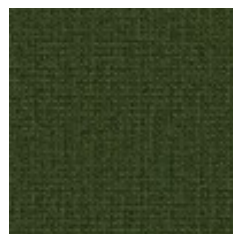
Flaxflower
3169-404



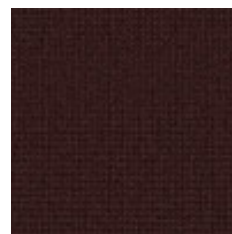
Inkwell
3169-405



Indigo
3169-406



Topiary
3169-501



Blackberry
3169-601



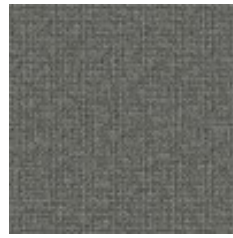
Eggplant
3169-602



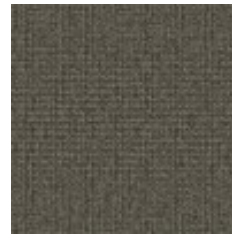
Autumnal
3169-701



Silverpoint
3169-801



Acier
3169-802



Slate
3169-803



Granite
3169-804