
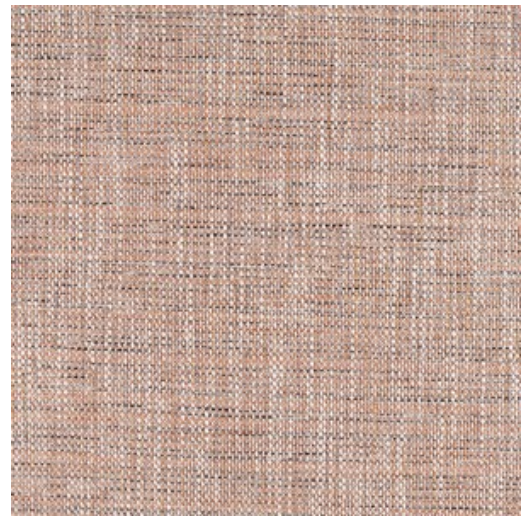


|                            |   |
|----------------------------|---|
| Designer                   | West Elm  |
| Use                        | Upholstery  |
| Content                    | 39% Polyester, 61% Acrylic  |
| Finish                     | Crypton   |
| Backing                    | Fluid Barrier (Crypton)   |
| Cleaning                   | Water-based Modified (WM)   |
| Weight                     | 27.5 ounces/linear yard   |
| Width                      | 55 inches (140 cm)  |
| Shown Railroaded           | No  |
| Flammability               | CA TB 117-2013  |
| Abrasion                   | 80,000 Wyzenbeek double rubs (CD)   |
| Lightfastness              | 40 hours  |
| ACT                        |  |
| Standards & Certifications | Greenguard Gold, Oeko-Tex Standard 100  |
| Sustainable Logistics      | Ships Carbon Neutral  |
| Warranty                   | 5 years   |



Yellow  
3172-201



Pink  
3172-301



Red  
3172-302



Medium Blue  
3172-401



Turquoise  
3172-402



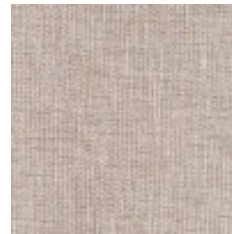
Blue  
3172-403



Indigo  
3172-404



Orange  
3172-701



Off-White  
3172-801



Grey  
3172-802



Charcoal  
3172-803



Multi  
3172-901