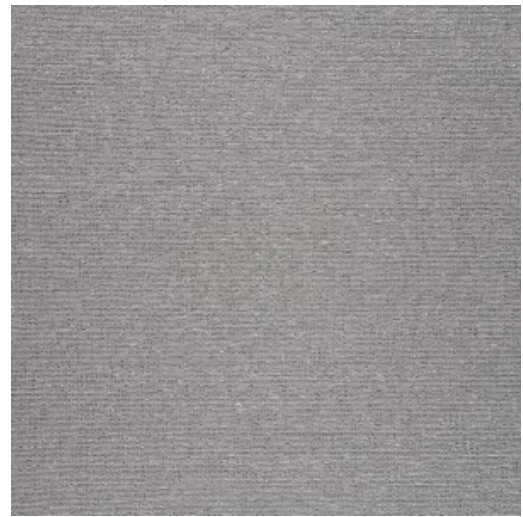


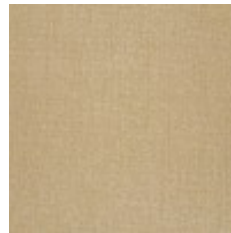
Use Wallcovering
Content 21% Polyester (Preconsumer Recycled), 32% Polyester (Solution Dyed), 47% Polyethylene
Finish Stain Repellent
Backing Acrylic (Flame Retardant)
Cleaning Bleach (10:1), Water-based/Solvent (WS)
Weight 10 ounces/linear yard
Width 54 inches (137 cm)
Hanging Method Straight Hang, Straight Across Match
Flammability ASTM E 84 Adhered Class A
Lightfastness 40 hours
Wallcovering Classification Type II Characteristics
ACT 
Standards & Certifications SCS Indoor Advantage Gold
Sustainable Logistics Ships Carbon Neutral
Warranty 10 years
Origin United States



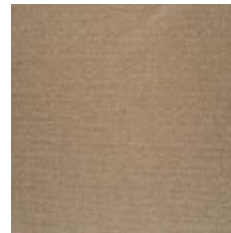
Stucco
3127-101



Corn
3127-102



Balsa
3127-103



Gold Coin
3127-104



Baha
3127-401



New Pea
3127-501



Bermuda
3127-502



Ice
3127-801



Plaster
3127-802



Glacier
3127-803



Old Silver
3127-804



Pewter
3127-805