

Use	Wallcovering, Panel Fabrics
Content	32% Polypropylene, 68% Polyester (Postconsumer Recycled)
Finish	Stain Repellent
Backing	Acrylic
Cleaning	Bleach (10:1), Water-based/Solvent (WS)
Weight	16.5 ounces/linear yard
Width	55 inches (140 cm)
Hanging Method	Straight Hang, Straight Across Match
Flammability	ASTM E 84 Adhered Class A, ASTM E 84 Unadhered Class A
Lightfastness	40 hours
Wallcovering Classification	Type II Characteristics
ACT	☀️ 🔥 ☆ 🌱
Standards & Certifications	SCS Indoor Advantage Gold
Sustainable Logistics	Ships Carbon Neutral
Warranty	10 years
Origin	Canada



Husk
3126-101



Barley
3126-102



Wheat
3126-103



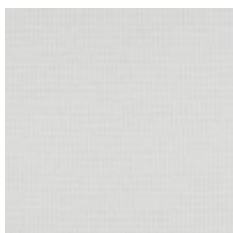
Cocoa
3126-104



Petal
3126-301



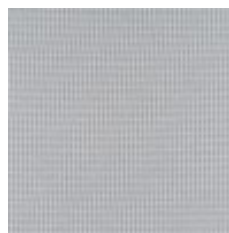
Lemongrass
3126-501



Pearl
3126-801



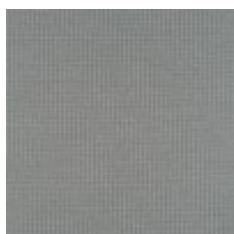
Moon
3126-802



Silver
3126-803



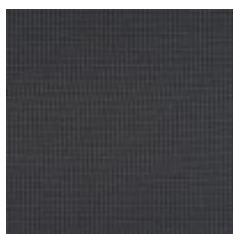
Jade
3126-804



Thunder
3126-805



Current
3126-806



Obsidian
3126-807