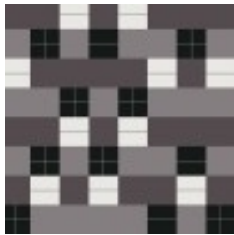
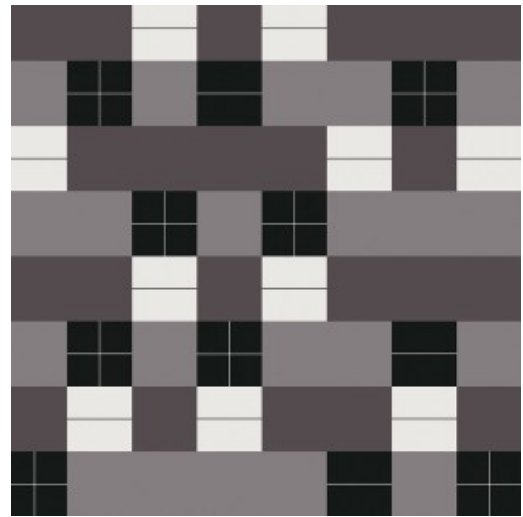


Designer	Anni Albers
Use	Wallcovering
Content	DNA: 10% Polyester, 20% Cellulose, 30% Cellulose (Postconsumer Recycled), 40% Latex
Cleaning	Water-based (W)
Weight	15 ounces/linear yard
Width	50 inches (127 cm)
Repeat	V 62.5 inches x H 50 inches (V 158.8 cm x H 127 cm)
Hanging Method	Straight Hang, Straight Across Match
Flammability	ASTM E 84 Adhered Class A
Lightfastness	200 hours
Wallcovering Classification	Type II Characteristics
ACT	☀️ 🔥 ♻️
Standards & Certifications	SCS Indoor Advantage Gold
Sustainable Logistics	Ships Carbon Neutral
Warranty	5 years
Origin	United States



Original
3038-801