


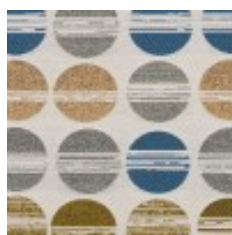
| | |
|----------------------------|---|
| Use | Upholstery |
| Content | 16% Nylon (Solution Dyed), 84% Polyester |
| Finish | Nanotechnology Stain Resistant |
| Backing | Acrylic |
| Cleaning | Bleach (10:1), Water-based/Solvent (WS) |
| Weight | 19.5 ounces/linear yard |
| Width | 58 inches (147 cm) |
| Repeat | V 14.25 inches x H 7.5 inches (V 36.2 cm x H 19.1 cm) |
| Shown Railroaded | No |
| Flammability | CA TB 117-2013 |
| Abrasion | 200,000 Wyzenbeek double rubs (CD) |
| Lightfastness | 40 hours |
| ACT |  |
| Standards & Certifications | CA 01350 |
| Material Chemistry | No Flame Retardants |
| Sustainable Logistics | Ships Carbon Neutral |
| Warranty | 5 years |
| Origin | United States |



Grove
3847-101



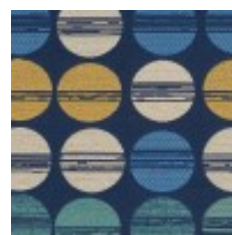
Almond
3847-102



Fresco
3847-401



Pesca
3847-402



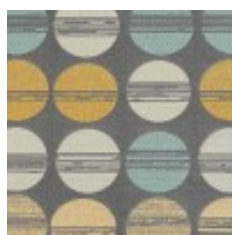
Oceania
3847-403



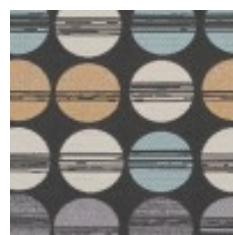
Poppy
3847-701



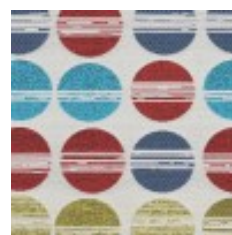
Concrete
3847-801



Slate
3847-802



Graphite
3847-803



Colorwheel
3847-901