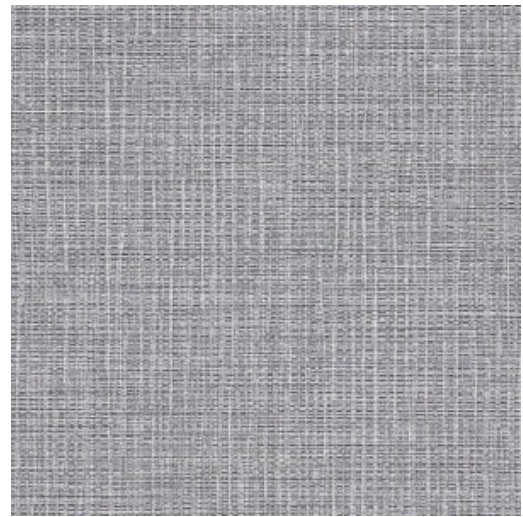


Use	Wallcovering
Content	100% Vinyl (without Harmful Phthalates)
Backing	Cotton, Scrim
Cleaning	Water-based (W)
Weight	25 ounces/linear yard
Width	52 inches (132 cm)
Hanging Method	Reverse Hang, Random Match
Flammability	ASTM E 84 Adhered Class A
Lightfastness	40 hours
Wallcovering Classification	Type II
ACT	☀️ 🔥 🌱
Standards & Certifications	CA 01350
Sustainable Logistics	Ships Carbon Neutral
Warranty	10 years
Origin	United States



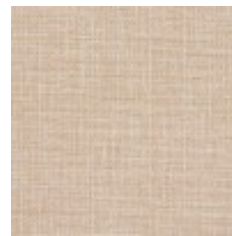
Tatami
6737-101



Sisal
6737-102



Harbor
6737-103



Wheat
6737-201



Straw
6737-202



Mist
6737-401



Island
6737-402



Wave
6737-403



Lavender
6737-601



Polar
6737-801



Moon
6737-802



Smoke
6737-803