
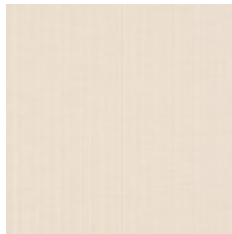


Use	Wallcovering
Content	100% Vinyl (without Harmful Phthalates)
Backing	Cotton, Scrim
Cleaning	Water-based (W)
Weight	30 ounces/linear yard
Width	52 inches (132 cm)
Hanging Method	Reverse Hang, Random Match
Flammability	ASTM E 84 Adhered Class A
Lightfastness	40 hours
Wallcovering Classification	Type II
ACT	
Optimized Chemistry	No Harmful Phthalates
Sustainable Logistics	Ships Carbon Neutral
Warranty	10 years
Origin	United States



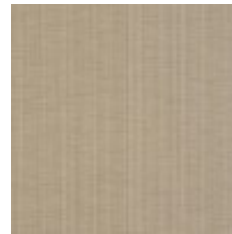
Creme
6728-101



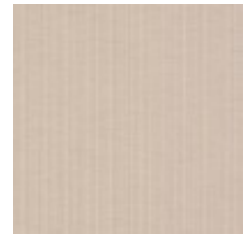
Ecrú
6728-102



Flax
6728-103



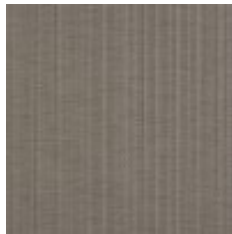
Fawn
6728-104



Loam
6728-105



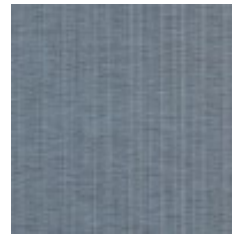
Otter
6728-106



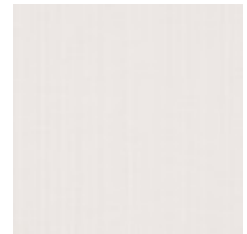
Mushroom
6728-107



Turquoise
6728-401



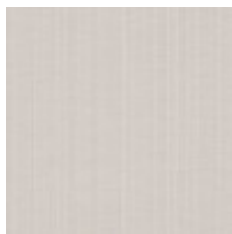
Denim
6728-402



White
6728-801



Cloud
6728-802



Concrete
6728-803