

Use	Wallcovering
Content	100% Vinyl (without Harmful Phthalates)
Finish	Protective Topcoat
Backing	Cotton, Non-woven, Polyester (Postconsumer Recycled)
Cleaning	Bleach (10:1), Water-based (W)
Weight	21 ounces/linear yard
Width	54 inches (137 cm)
Hanging Method	Reverse Hang, Random Match
Flammability	ASTM E 84 Adhered Class A
Lightfastness	40 hours
Wallcovering Classification	Type II
ACT	
Sustainable Logistics	Ships Carbon Neutral
Warranty	10 years
Origin	United States



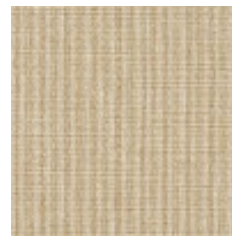
Bone
6716-101



Basmati
6716-102



Linen
6716-103



Wheat
6716-104



Patina
6716-105



Golden
6716-201



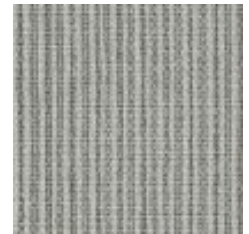
Fawn
6716-202



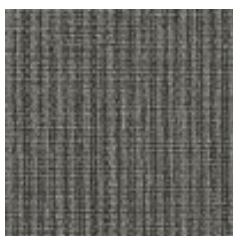
Pewter
6716-401



Overcast
6716-801



Pebble
6716-802



Ink
6716-803