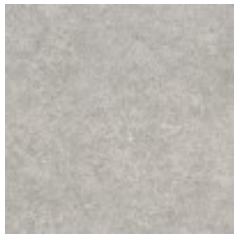


|                            |                                     |
|----------------------------|-------------------------------------|
| Use                        | Architectural Finishes              |
| Content                    | 100% Vinyl                          |
| Backing                    | Acrylic Pressure-sensitive Adhesive |
| Cleaning                   | Bleach (1:1), Water-based (W)       |
| Weight                     | 1.24 ounces square foot             |
| Width                      | 48 inches (122 cm)                  |
| Thickness                  | 8 mils (.2 mm)                      |
| Flammability               | ASTM E 84 Adhered Class A           |
| Abrasion                   | 7,000 Taber cycles                  |
| Standards & Certifications | CA 01350                            |
| Material Chemistry         | No Flame Retardants                 |
| Sustainable Logistics      | Ships Carbon Neutral                |
| Warranty                   | 5 years                             |
| Origin                     | Japan                               |



CN-1621  
CN-1621



CN-1622  
CN-1622



CN-1623  
CN-1623



CN-1958  
CN-1958