
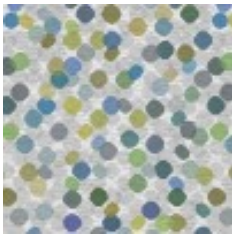
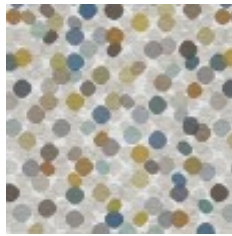


| | |
|-----------------------|------------------------------------------------------------------------------------------|
| Use | Upholstery, Panel Fabrics |
| Content | 1% Polyester, 9% Polyester (Preconsumer Recycled), 90% Polyester (Postconsumer Recycled) |
| Cleaning | Water-based/Solvent (WS) |
| Weight | 11.5 ounces/linear yard |
| Width | 57 inches (145 cm) |
| Repeat | V 40 inches x H 27 inches (V 101.6 cm x H 68.6 cm) |
| Flammability | ASTM E 84 Unadhered Class A, CA TB 117-2013 |
| Abrasion | 100,000 Wyzenbeek double rubs (CD) |
| Lightfastness | 40 hours |
| ACT |  |
| LEED | Recycled Content |
| Sustainable Logistics | Ships Carbon Neutral |
| Warranty | 5 years |
| Origin | Canada |



Aqua
4143-501



Truffle
4143-901



Confetti
4143-902