
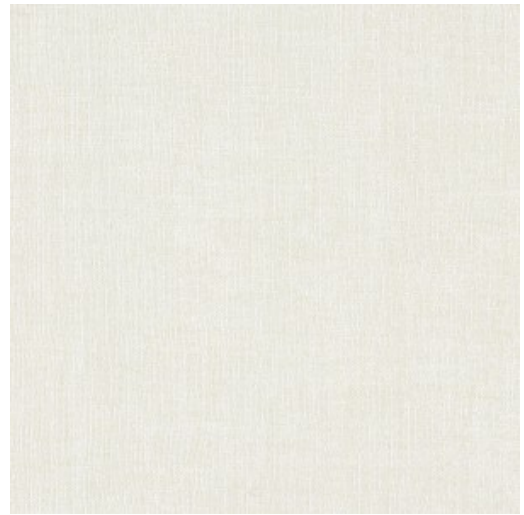


Use Wallcovering
 Content 100% Vinyl (without Harmful Phthalates)
 Finish Polyurethane
 Backing Cotton, Osnaburg, Polyester
 Cleaning Water-based (W)
 Weight 21 ounces/linear yard
 Width 54 inches (137 cm)
 Hanging Method Reverse Hang, Random Match
 Flammability ASTM E 84 Adhered Class A, IMO 2010 FTP code 5 (w/coV)
 Lightfastness 40 hours
 Wallcovering Classification Type II
 ACT 
 Standards & Certifications CA 01350, SCS Indoor Advantage Gold
 Optimized Chemistry No Harmful Phthalates
 Sustainable Logistics Ships Carbon Neutral
 Warranty 10 years
 Origin United States



Eggshell
6545-101



Sand
6545-102



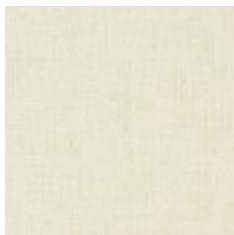
Pumice
6545-103



Mocha
6545-104



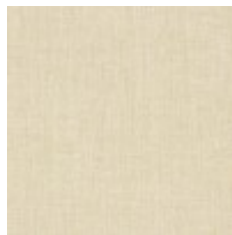
Buttermilk
6545-105



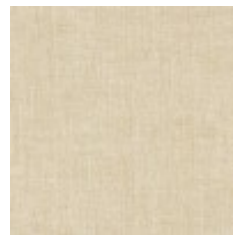
Wheat
6545-106



Doe
6545-107



Bone
6545-108



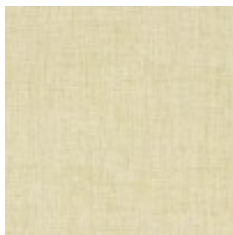
Sandstone
6545-109



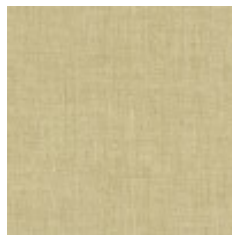
Jute
6545-110



hemp
6545-111



Cornsilk
6545-201



Straw
6545-202



Nugget
6545-203



Steppe
6545-204



Cerise
6545-301



Cornflower
6545-401



Ink
6545-402



Lichen
6545-501



Quince
6545-502



Orchid
6545-601



Plum
6545-602



Penny
6545-701



Henna
6545-702



Aluminum
6545-801



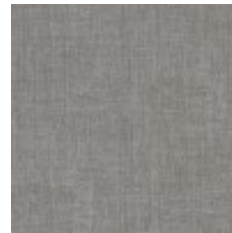
Zinc
6545-802



Nickel
6545-803



Mercury
6545-804



Pewter
6545-805



Pyrite
6545-806



Mica
6545-807