
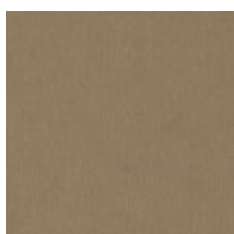
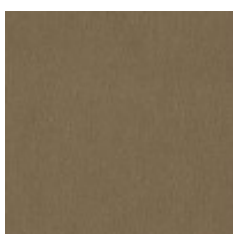


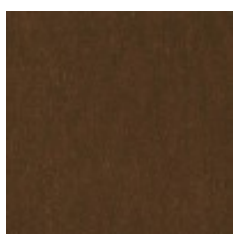
| | |
|----------------------------|---|
| Use | Upholstery |
| Content | 49% Mohair, 51% Cotton |
| Cleaning | Solvent (S) |
| Weight | 31.74 ounces/linear yard |
| Width | 55 inches (140 cm) |
| Shown Railroaded | No |
| Flammability | CA TB 117-2013, NFPA 260 |
| Abrasion | 100,000 Wyzenbeek double rubs (CD) |
| Lightfastness | 40 hours |
| ACT |  |
| Standards & Certifications | C2C Bronze, Oeko-Tex Standard 100 |
| Optimized Chemistry | Cleaning Protocol Replaces PFCs |
| Sustainable Logistics | Ships Carbon Neutral |
| Warranty | 3 years |
| Origin | Netherlands |



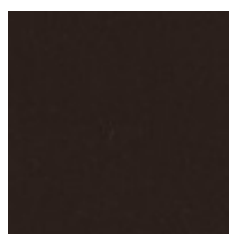
Cream
3575-101



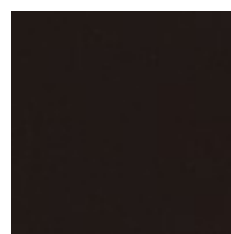
Pumice
3575-102



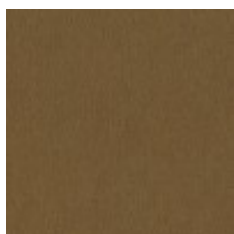
Walnut
3575-103



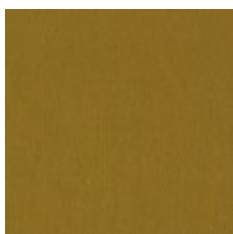
Kodiak
3575-104



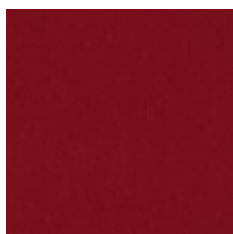
Bittersweet
3575-105



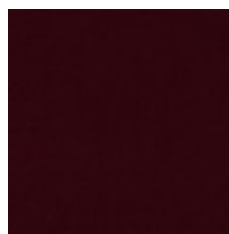
Caramel
3575-106



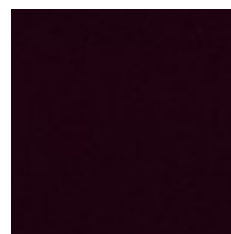
Daisy
3575-201



Tomato
3575-301



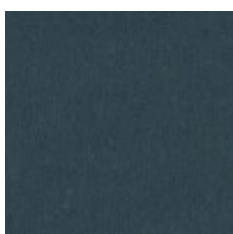
Crimson
3575-302



Burgundy
3575-303



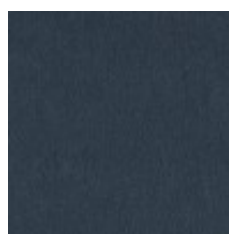
Sky
3575-401



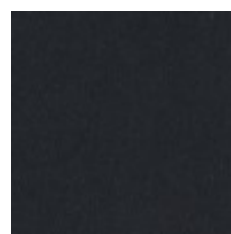
Teal
3575-402



Bluebell
3575-403



Denim
3575-404



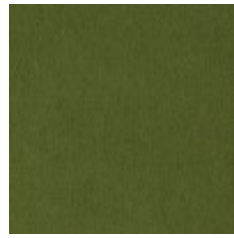
Cadet
3575-405



Indigo
3575-406



Fir
3575-501



Grass
3575-502



Citron
3575-503



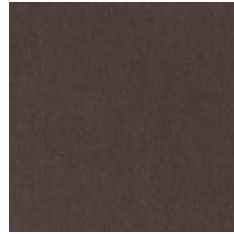
Moss
3575-504



Sage
3575-505



Dawn
3575-601



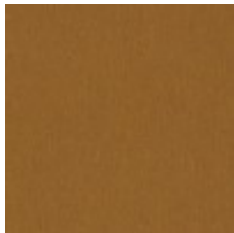
Thistle
3575-602



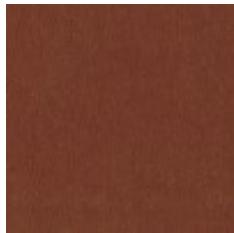
Aubergine
3575-604



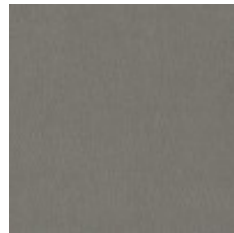
Magenta
3575-605



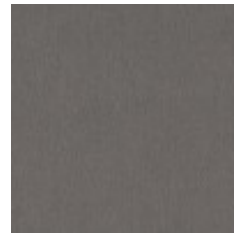
Sun
3575-701



Clay
3575-702



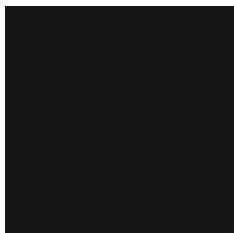
Mist
3575-801



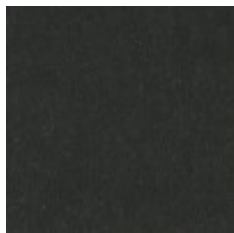
Gull Grey
3575-802



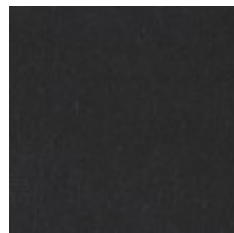
Stone
3575-803



Night
3575-806



Mallard
3575-807



Elephant
3575-808