
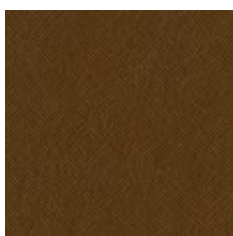


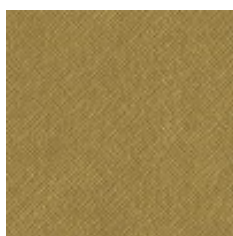
Use Upholstery
 Content 5% Polyester, 5% Polyurethane, 90% Nylon Microfiber
 Cleaning Bleach (10:1), Water-based/Solvent (WS)
 Weight 13.2 ounces/linear yard
 Width 54 inches (137 cm)
 Shown Railroaded No
 Flammability CA TB 117-2013, NFPA 260
 Abrasion 100,000 Wyzenbeek double rubs (CD)
 Lightfastness 40 hours
 ACT 
 Standards & Certifications CA 01350
 Material Chemistry Alternative to PVC, Cleaning Protocol Replaces PFCs, No Flame Retardants
 Sustainable Logistics Ships Carbon Neutral
 Warranty 5 years
 Origin China



Platinum
3559-101



Peat
3559-102



Gold
3559-201



Rose
3559-301



Blue Sky
3559-401



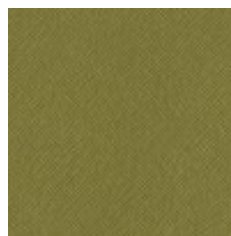
Cadet
3559-402



Ocean
3559-403



Foliage
3559-501



Grass
3559-502



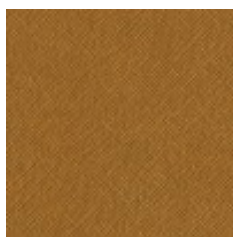
Tropic
3559-503



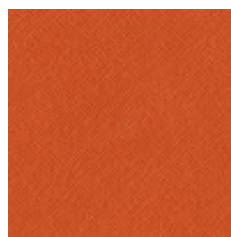
Merlot
3559-601



Grape
3559-602



Copper
3559-701



Canyon
3559-702



Red Clay
3559-703



Snow
3559-801



Overcast
3559-802



Stone
3559-803



Graphite
3559-804



Charcoal
3559-805