
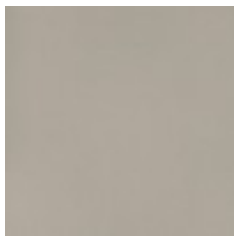


Use	Upholstery
Content	5% Polyester, 5% Polyurethane, 90% Nylon Microfiber
Cleaning	Bleach (10:1), Water-based/Solvent (WS)
Weight	13.2 ounces/linear yard
Width	54 inches (137 cm)
Shown Railroaded	No
Flammability	CA TB 117-2013, NFPA 260
Abrasion	100,000 Wyzenbeek double rubs (WS)
Lightfastness	40 hours
ACT	
Standards & Certifications	CA 01350
Material Chemistry	Alternative to PVC, Cleaning Protocol Replaces PFCs, No Flame Retardants
Sustainable Logistics	Ships Carbon Neutral
Warranty	5 years
Origin	United States



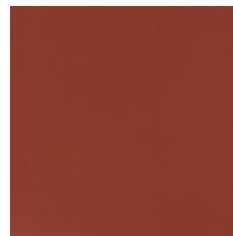
Canyon
2684-101



Dune
2684-102



Espresso
2684-103



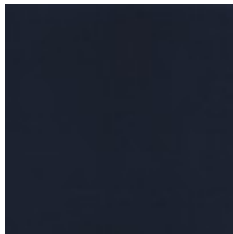
Lacquer
2684-301



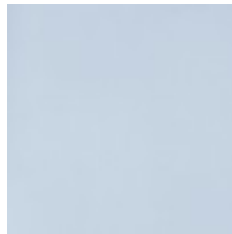
Cordovan
2684-302



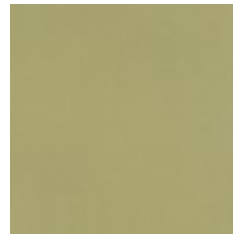
Bluegrass
2684-401



Ink
2684-402



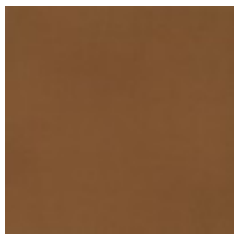
Moonstone
2684-403



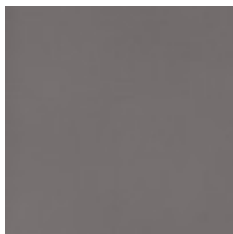
Pear
2684-501



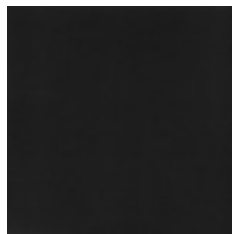
Meadow
2684-502



Saddle
2684-701



Stone
2684-801



Smoke
2684-802