

Ludlow

6693

10% Polyester, 40% Latex, 50% Cellulose

Wallcovering




Product specification

Name	Ludlow
Color	Slate
Number	6693-401
Product Category	Wallcovering
Material Type	Coated
Content	10% Polyester, 40% Latex, 50% Cellulose
Finish	None
Backing	None
Width	50 inches (127 cm)
Weight	18.00 ounces/linear yard (558 grams/linear meter)
Average Bolt Size	20 yards
Installation Method	Straight Hang, Straight Across Match
Origin	United States
Warranty	5 years
Introduction Date	03/17/2017

Design

Pattern Type	Geometric, Texture
Pattern Scale	Large
Repeat	V 75.00 inches x H 50.00 inches (V 190.50 cm x H 127.00 cm)

Performance

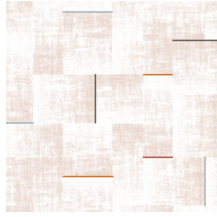
Flammability	ASTM E 84 Adhered Class A
Lightfastness	200 hours
Performance Standards	  
Wallcovering Classification	Type II Characteristics
Cleaning Code	Water-based (W)
Approved Disinfectants	Oxivir® 1 Wipes Oxivir® 1 Oxivir® Tb Wipes Oxivir® Tb Virex® II 256

Sustainability

Certifications & Programs	Healthier Hospitals, HPD, LBC Red List Compliant, LEED, Mindful Materials, No Prop 65 Chemicals, SCS Indoor Advantage Gold, WELL
Material Health	Low VOC, No Antimicrobials, No Flame Retardants, No PFAS, No PVC



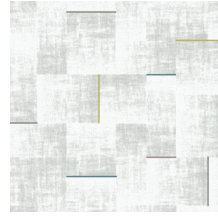
Slate
6693-401



Sandstone
6693-701



Concrete
6693-801



Limestone
6693-901