

Hem Stitch

3752

1% Polyester, 9% Polyester (Preconsumer Recycled), 90% Polyester (Postconsumer Recycled)

Upholstery, Panel, Multiuse


Product specification

Name	Hem Stitch
Color	Creme
Number	3752-101
Product Category	Upholstery, Panel, Multiuse
Material Type	Woven
Content	1% Polyester, 9% Polyester (Preconsumer Recycled), 90% Polyester (Postconsumer Recycled)
Width	57 inches (145 cm)
Weight	11.50 ounces/linear yard (357 grams/linear meter)
Average Bolt Size	60 yards
Shown Railroaded	No
Origin	Canada
Price	\$55.00/yard
Warranty	5 years
Introduction Date	01/15/2016

Design

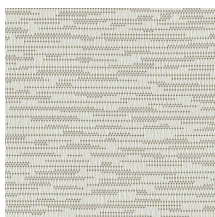
Designer	West Elm
Collection	Loop to Loop Platform, West Elm
Pattern Type	Dot, Texture
Pattern Scale	Small

Performance

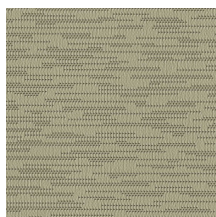
Abrasion	100,000 Wyzenbeek double rubs
Flammability	ASTM E 84 Unadhered Class A, CA TB 117-2013, UL Listed
Lightfastness	40 hours
Performance Standards	
Cleaning Code	Water-based/Solvent (WS)

Sustainability

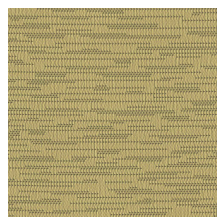
Certifications & Programs	Healthier Hospitals, HPD, LBC Red List Compliant, LEED, Mindful Materials, No Prop 65 Chemicals, WELL
Material Health	Low VOC, No Antimicrobials, No Flame Retardants, No PFAS



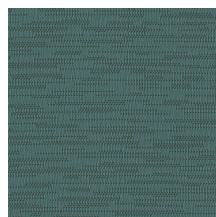
Creme
3752-101



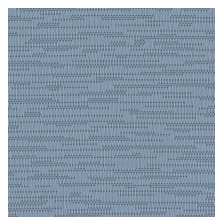
Antelope
3752-102



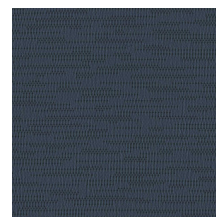
Husk
3752-201



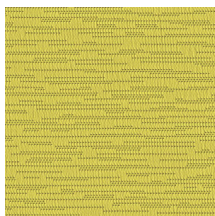
Island
3752-401



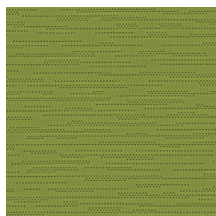
Summer
3752-402



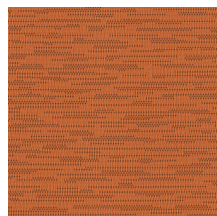
Dark Sky
3752-403



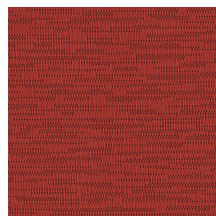
Chartreuse
3752-501



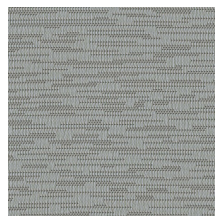
Leaf
3752-502



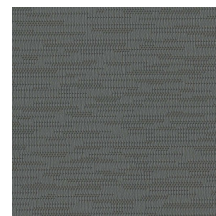
Tangerine
3752-701



Campfire
3752-702



Dove
3752-801



Walrus
3752-802