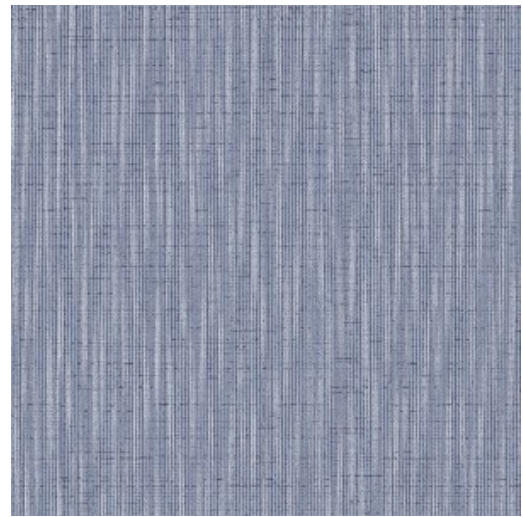


Use	Wallcovering
Content	100% Vinyl (without Harmful Phthalates)
Backing	Cotton, Scrim
Cleaning	Water-based (W)
Weight	30 ounces/linear yard
Width	52 inches (132 cm)
Hanging Method	Reverse Hang, Random Match
Flammability	ASTM E 84 Adhered Class A
Lightfastness	40 hours
Wallcovering Classification	Type II
ACT	☀️ 🔥 🌱
Standards & Certifications	CA 01350
Sustainable Logistics	Ships Carbon Neutral
Warranty	10 years
Origin	United States



Foam
6741-101



Quarry
6741-102



Quicksand
6741-103



Coal
6741-104



Basket
6741-201



Rose
6741-301



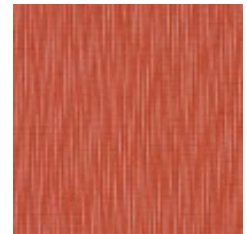
Skylight
6741-401



Shore
6741-402



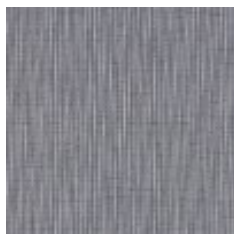
Seaside
6741-403



Satsuma
6741-701



Moon
6741-801



Dock
6741-802