


Use Wallcovering
Content 100% Vinyl (without Harmful Phthalates)
Finish Protective Topcoat
Backing Cotton, Non-woven, Polyester (Postconsumer Recycled)
Cleaning Water-based (W)
Weight 21 ounces/linear yard
Width 54 inches (137 cm)
Hanging Method Reverse Hang, Random Match
Flammability ASTM E 84 Adhered Class A
Lightfastness 40 hours
Wallcovering Classification Type II
ACT 
Sustainable Logistics Ships Carbon Neutral
Warranty 10 years
Origin United States



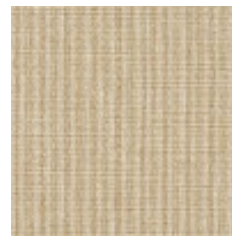
Bone
6716-101



Basmati
6716-102



Linen
6716-103



Wheat
6716-104



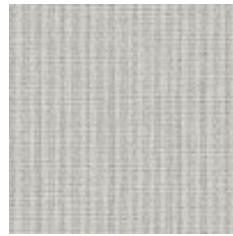
Patina
6716-105



Golden
6716-201



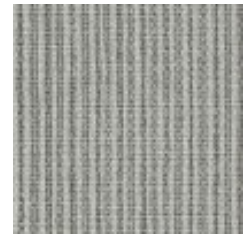
Fawn
6716-202



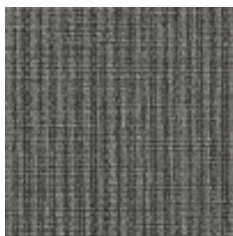
Pewter
6716-401



Overcast
6716-801



Pebble
6716-802



Ink
6716-803