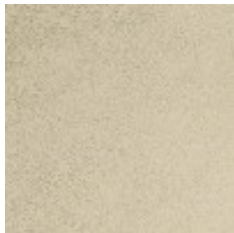
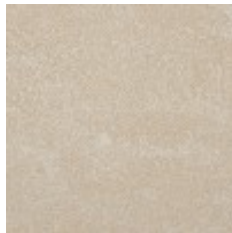


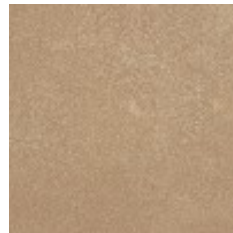
Use	Wallcovering
Content	5% Vinyl (Preconsumer Recycled), 95% Vinyl (without Harmful Phthalates)
Backing	Cellulose, Non-woven, Polyester
Cleaning	Water-based (W)
Weight	20 ounces/linear yard
Width	54 inches (137 cm)
Hanging Method	Reverse Hang, Random Match
Flammability	ASTM E 84 Adhered Class A, IMO 2010 FTP code 5 (w/cov)
Lightfastness	40 hours
Wallcovering Classification	Type II
ACT	
Standards & Certifications	CA 01350, SCS Indoor Advantage Gold
Optimized Chemistry	No Harmful Phthalates
Sustainable Logistics	Ships Carbon Neutral
Warranty	10 years
Origin	United States



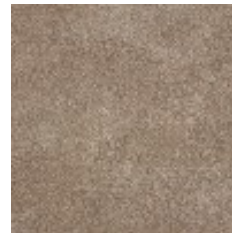
Bisque  
6689-101



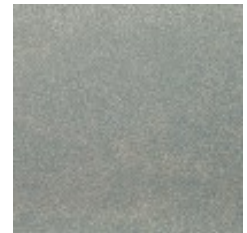
Oyster  
6689-102



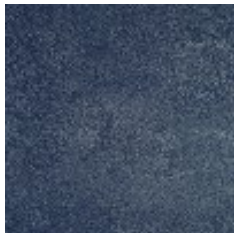
French Grey  
6689-103



Oak  
6689-104



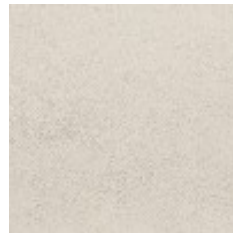
Mist  
6689-401



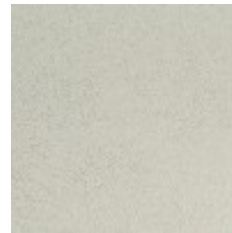
Sapphire  
6689-402



Snow  
6689-801



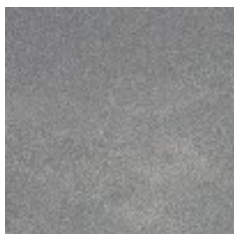
Pearl  
6689-802



Opal  
6689-803



Platinum  
6689-804



Slate  
6689-805



Graphite  
6689-806



Night Sky  
6689-807