


Use	Wallcovering
Content	DNA: 10% Polyester, 20% Cellulose, 30% Cellulose (Postconsumer Recycled), 40% Latex
Cleaning	Water-based (W)
Weight	15 ounces/linear yard
Width	50 inches (127 cm)
Repeat	V 25 inches x H 50 inches (V 63.5 cm x H 127 cm)
Hanging Method	Straight Hang, Straight Across Match
Flammability	ASTM E 84 Adhered Class A
Lightfastness	40 hours
Wallcovering Classification	Type II Characteristics
ACT	
Standards & Certifications	SCS Indoor Advantage Gold
Optimized Chemistry	Alternative to PVC
LEED	Recycled Content
Sustainable Logistics	Ships Carbon Neutral
Warranty	5 years
Origin	United States



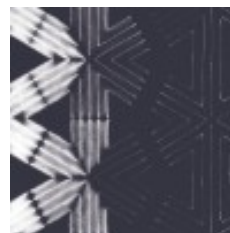
Lichen
6642-201



Robin Egg
6642-401



Ash Grey
6642-801



Ink
6642-802